

FUTURE LAND USE & GROWTH & ANNEXATION AREAS

Town of Townsend

NEW CASTLE COUNTY

DE

9/19/2023

SCALE: 1" = 3500'

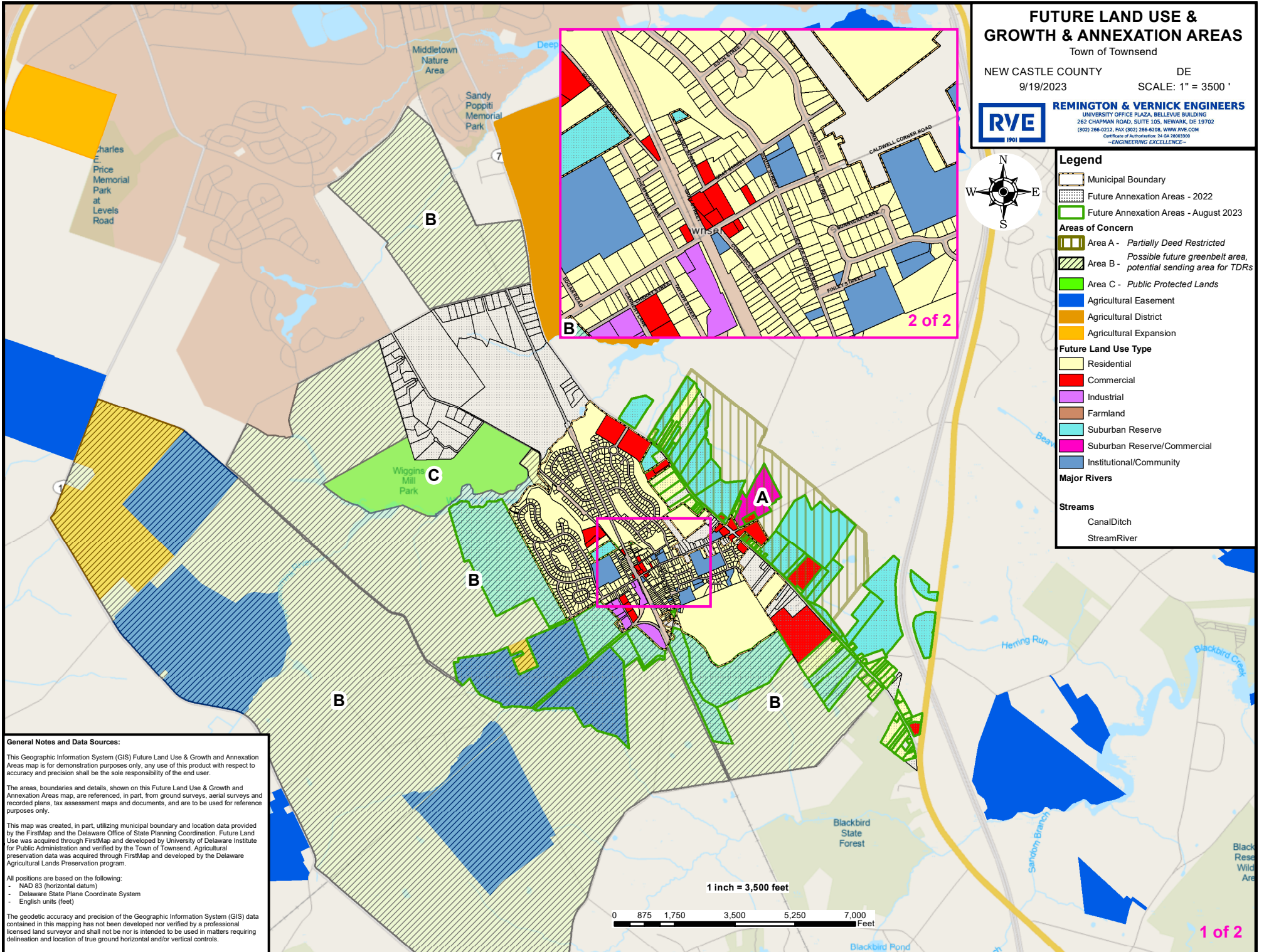


REMINGTON & VERNICK ENGINEERS
 UNIVERSITY OFFICE PLAZA, BELLEVUE BUILDING
 262 CHAPMAN ROAD, SUITE 105, NEWARK, DE 19702
 (302) 266-0212, FAX (302) 266-6708, WWW.RVE.COM
Certificates of Authorization: 24, 08, 0903000
 -ENGINEERING EXCELLENCE-



Legend

- Municipal Boundary
- Future Annexation Areas - 2022
- Future Annexation Areas - August 2023
- Areas of Concern**
- Area A - Partially Deed Restricted
- Area B - Possible future greenbelt area, potential sending area for TDRs
- Area C - Public Protected Lands
- Agricultural Easement
- Agricultural District
- Agricultural Expansion
- Future Land Use Type**
- Residential
- Commercial
- Industrial
- Farmland
- Suburban Reserve
- Institutional/Community
- Major Rivers**
- Streams**
- Canal/Ditch
- Stream/River



General Notes and Data Sources:

This Geographic Information System (GIS) Future Land Use & Growth and Annexation Areas map is for demonstration purposes only, any use of this product with respect to accuracy and precision shall be the sole responsibility of the end user.

The areas, boundaries and details, shown on this Future Land Use & Growth and Annexation Areas map, are referenced, in part, from ground surveys, aerial surveys and recorded plans, tax assessment maps and documents, and are to be used for reference purposes only.

This map was created, in part, utilizing municipal boundary and location data provided by the FirstMap and the Delaware Office of State Planning Coordination. Future Land Use was acquired through FirstMap and developed by University of Delaware Institute for Public Administration and verified by the Town of Townsend. Agricultural preservation data was acquired through FirstMap and developed by the Delaware Agricultural Lands Preservation program.

All positions are based on the following:
 - NAD 83 (horizontal datum)
 - Delaware State Plane Coordinate System
 - English units (feet)

The geodetic accuracy and precision of the Geographic Information System (GIS) data contained in this mapping has not been developed nor verified by a professional licensed land surveyor and shall not be nor is intended to be used in matters requiring delineation and location of true ground horizontal and/or vertical controls.

