

# FUTURE LAND USE & GROWTH & TOTAL ANNEXATION AREAS

Town of Townsend

NEW CASTLE COUNTY

DE

03/12/2024

SCALE: 1" = 3500'

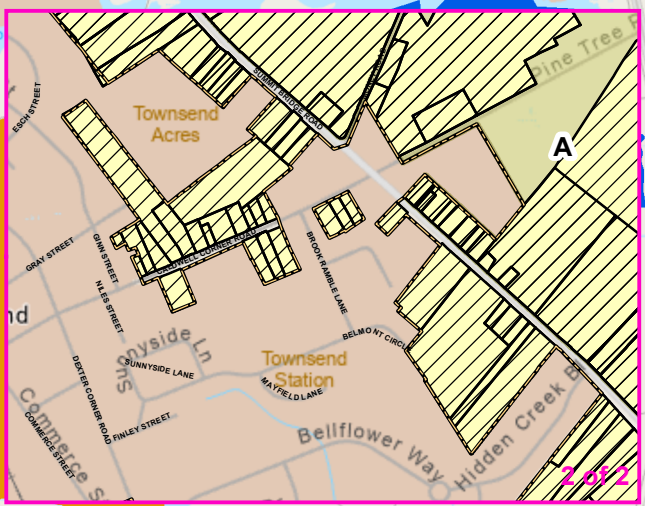
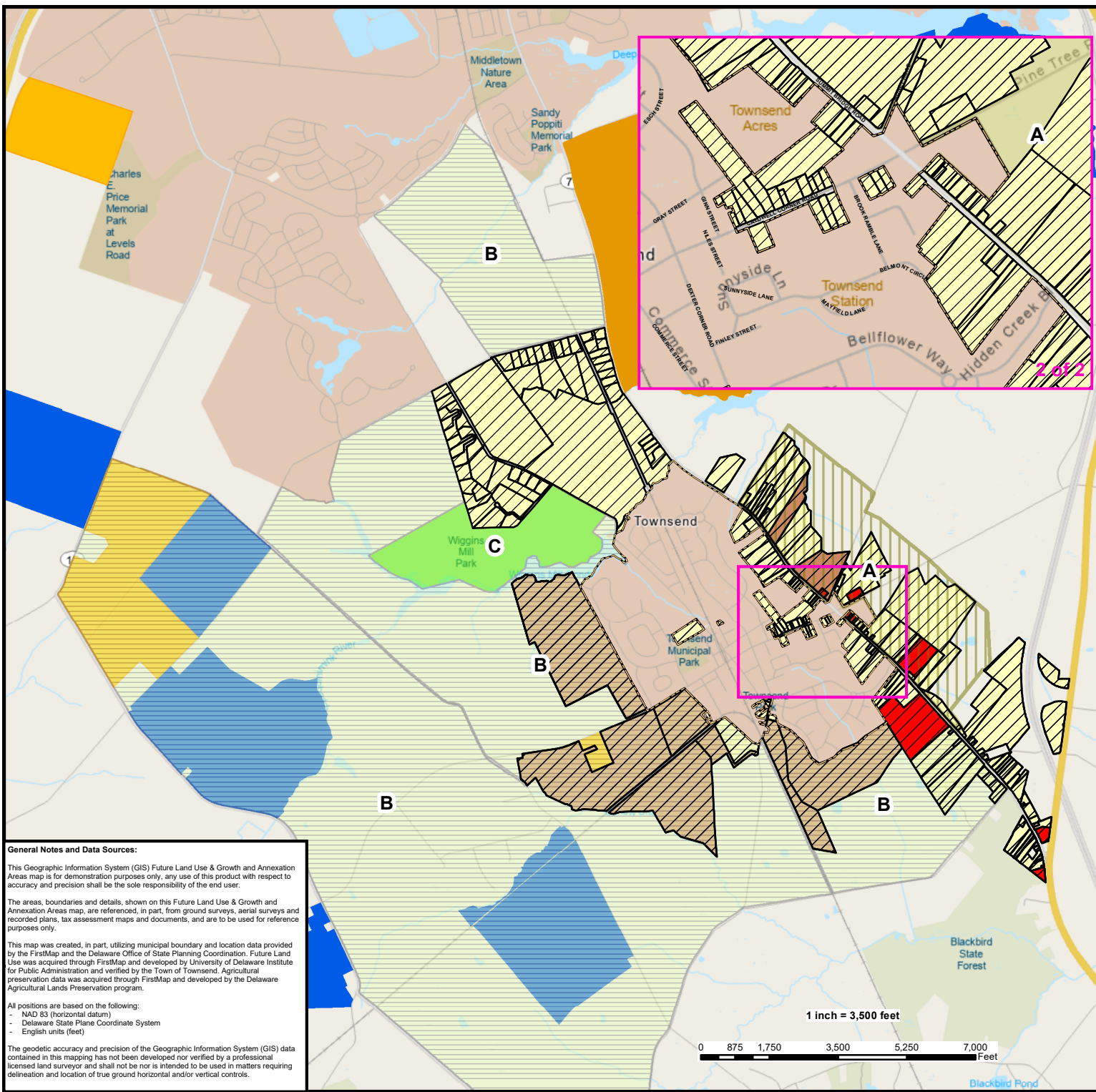


**REMINGTON & VERNICK ENGINEERS**  
 UNIVERSITY OFFICE PLAZA, BELEVUE BUILDING  
 262 CHAPMAN ROAD, SUITE 105, NEWARK, DE 19702  
 (302) 266-0212, FAX (302) 266-6708, WWW.RVE.COM  
 Certificate of Authorization: 24-08-0000200  
 —ENGINEERING EXCELLENCE—



## Legend

- Municipal Boundary
- Future Annexation Areas
- Areas of Concern**
- Area A - Partially Deed Restricted
- Area B - Possible future greenbelt area, potential sending area for TDRs
- Area C - Public Protected Lands
- Annex\_20\_Landuse
- Agricultural Easement
- Agricultural District
- Agricultural Expansion
- Future Land Use**
- Residential
- Commercial
- Industrial
- Farmland
- Institutional/Community
- Major Rivers**
- Stream
- Canal/Ditch
- Stream/River



**General Notes and Data Sources:**

This Geographic Information System (GIS) Future Land Use & Growth and Annexation Areas map is for demonstration purposes only, any use of this product with respect to accuracy and precision shall be the sole responsibility of the end user.

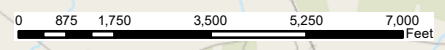
The areas, boundaries and details, shown on this Future Land Use & Growth and Annexation Areas map, are referenced, in part, from ground surveys, aerial surveys and recorded plans, tax assessment maps and documents, and are to be used for reference purposes only.

This map was created, in part, utilizing municipal boundary and location data provided by the FirstMap and the Delaware Office of State Planning Coordination. Future Land Use was acquired through FirstMap and developed by University of Delaware Institute for Public Administration and verified by the Town of Townsend. Agricultural preservation data was acquired through FirstMap and developed by the Delaware Agricultural Lands Preservation program.

All positions are based on the following:  
 - NAD 83 (horizontal datum)  
 - Delaware State Plane Coordinate System  
 - English units (feet)

The geodetic accuracy and precision of the Geographic Information System (GIS) data contained in this mapping has not been developed nor verified by a professional licensed land surveyor and shall not be nor is intended to be used in matters requiring delineation and location of true ground horizontal and/or vertical controls.

1 inch = 3,500 feet



# FUTURE LAND USE & GROWTH & ANNEXATION AREAS

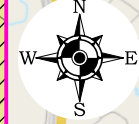
Town of Townsend

NEW CASTLE COUNTY  
02/29/2024

DE  
SCALE: 1" = 3500'

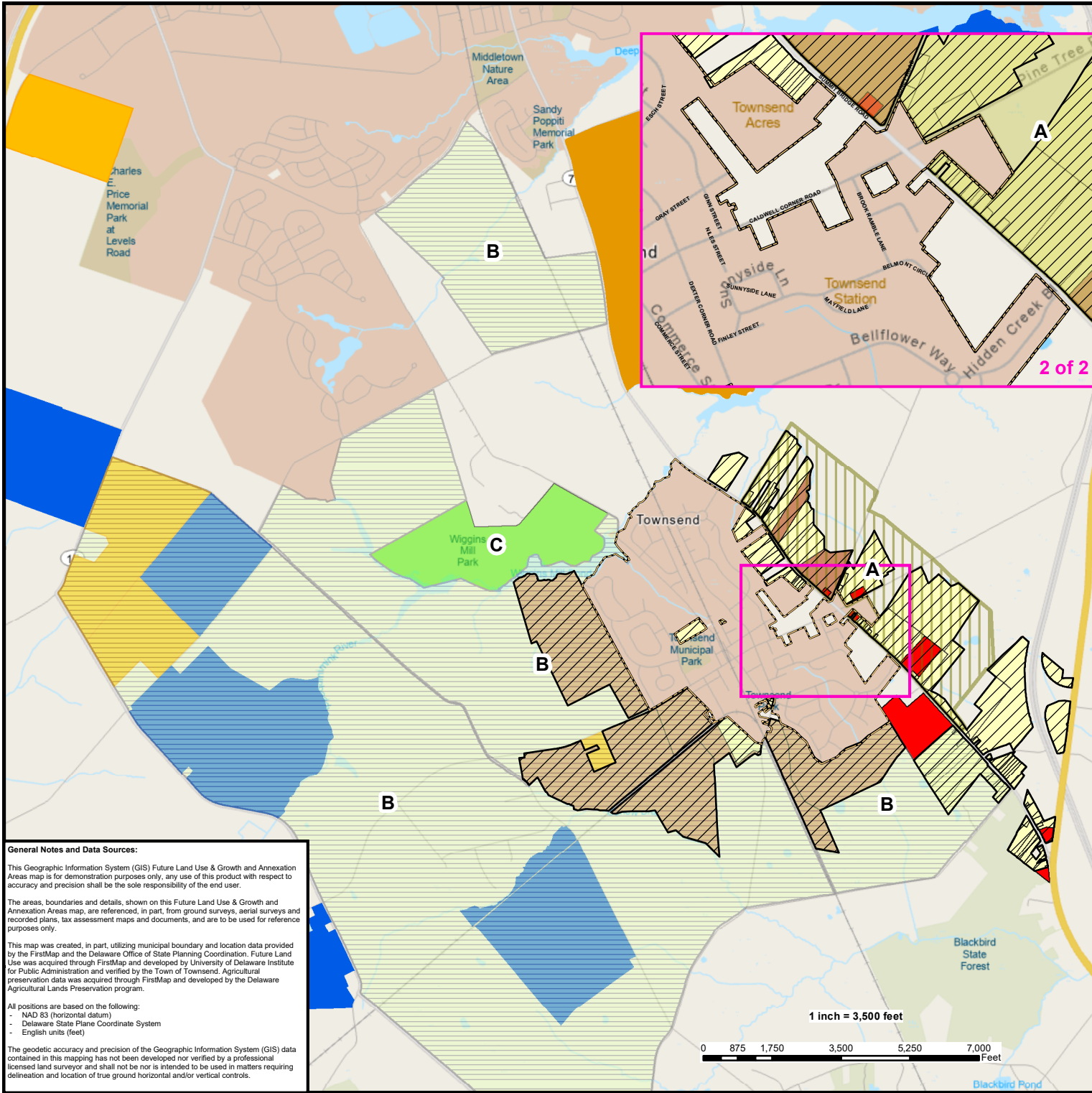


**REMINGTON & VERNICK ENGINEERS**  
UNIVERSITY OFFICE PLAZA, BELEVUE BUILDING  
262 CHAPMAN ROAD, SUITE 105, NEWARK, DE 19702  
(302) 266-0212, FAX (302) 266-6208, WWW.RVE.COM  
Certificate of Authorization: 24-08-0000300  
—ENGINEERING EXCELLENCE—



## Legend

- Municipal Boundary
- Future Annexation Areas (2024)
- Areas of Concern**
  - Area A - Partially Deed Restricted
  - Area B - Possible future greenbelt area, potential sending area for TDRs
  - Area C - Public Protected Lands
- Future Land Use**
  - Agricultural Easement
  - Agricultural District
  - Agricultural Expansion
  - Residential
  - Commercial
  - Industrial
  - Farmland
  - Institutional/Community
- Major Rivers**
  - Stream/River
  - Canal/Ditch



**General Notes and Data Sources:**

This Geographic Information System (GIS) Future Land Use & Growth and Annexation Areas map is for demonstration purposes only, any use of this product with respect to accuracy and precision shall be the sole responsibility of the end user.

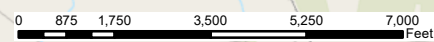
The areas, boundaries and details, shown on this Future Land Use & Growth and Annexation Areas map, are referenced, in part, from ground surveys, aerial surveys and recorded plans, tax assessment maps and documents, and are to be used for reference purposes only.

This map was created, in part, utilizing municipal boundary and location data provided by the FirstMap and the Delaware Office of State Planning Coordination. Future Land Use was acquired through FirstMap and developed by University of Delaware Institute for Public Administration and verified by the Town of Townsend. Agricultural preservation data was acquired through FirstMap and developed by the Delaware Agricultural Lands Preservation program.

All positions are based on the following:  
 - NAD 83 (horizontal datum)  
 - Delaware State Plane Coordinate System  
 - English units (feet)

The geodetic accuracy and precision of the Geographic Information System (GIS) data contained in this mapping has not been developed nor verified by a professional licensed land surveyor and shall not be used in matters requiring delineation and location of true ground horizontal and/or vertical controls.

1 inch = 3,500 feet





# TRANSPORTATION MAP

Town of Townsend

NEW CASTLE COUNTY DE

12/07/2023

SCALE: 1" = 3500'



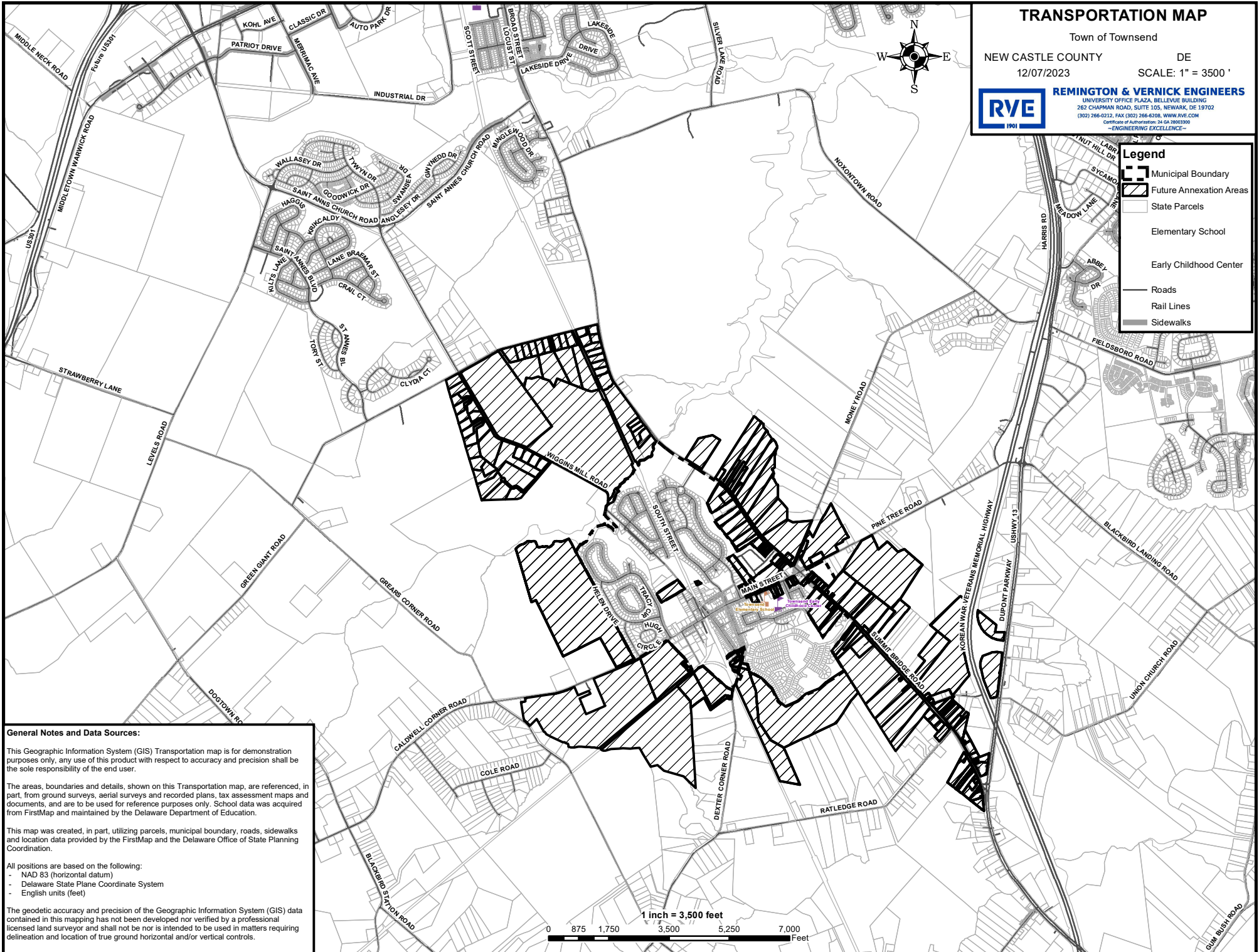
**REMINGTON & VERNICK ENGINEERS**

UNIVERSITY OFFICE PLAZA, BELLEVUE BUILDING  
262 CHARMAN ROAD, SUITE 105, NEWARK, DE 19702  
(302) 266-0212, FAX (302) 266-6208, WWW.RVE.COM  
Certificate of Authorization: 24 GA 28003300  
—ENGINEERING EXCELLENCE—



### Legend

- Municipal Boundary
- Future Annexation Areas
- State Parcels
- Elementary School
- Early Childhood Center
- Roads
- Rail Lines
- Sidewalks



**General Notes and Data Sources:**

This Geographic Information System (GIS) Transportation map is for demonstration purposes only, any use of this product with respect to accuracy and precision shall be the sole responsibility of the end user.

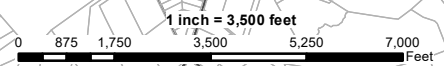
The areas, boundaries and details, shown on this Transportation map, are referenced, in part, from ground surveys, aerial surveys and recorded plans, tax assessment maps and documents, and are to be used for reference purposes only. School data was acquired from FirstMap and maintained by the Delaware Department of Education.

This map was created, in part, utilizing parcels, municipal boundary, roads, sidewalks and location data provided by the FirstMap and the Delaware Office of State Planning Coordination.

All positions are based on the following:

- NAD 83 (horizontal datum)
- Delaware State Plane Coordinate System
- English units (feet)

The geodetic accuracy and precision of the Geographic Information System (GIS) data contained in this mapping has not been developed nor verified by a professional licensed land surveyor and shall not be nor is intended to be used in matters requiring delineation and location of true ground horizontal and/or vertical controls.



# STRATEGIES FOR STATE POLICIES AND SPENDING

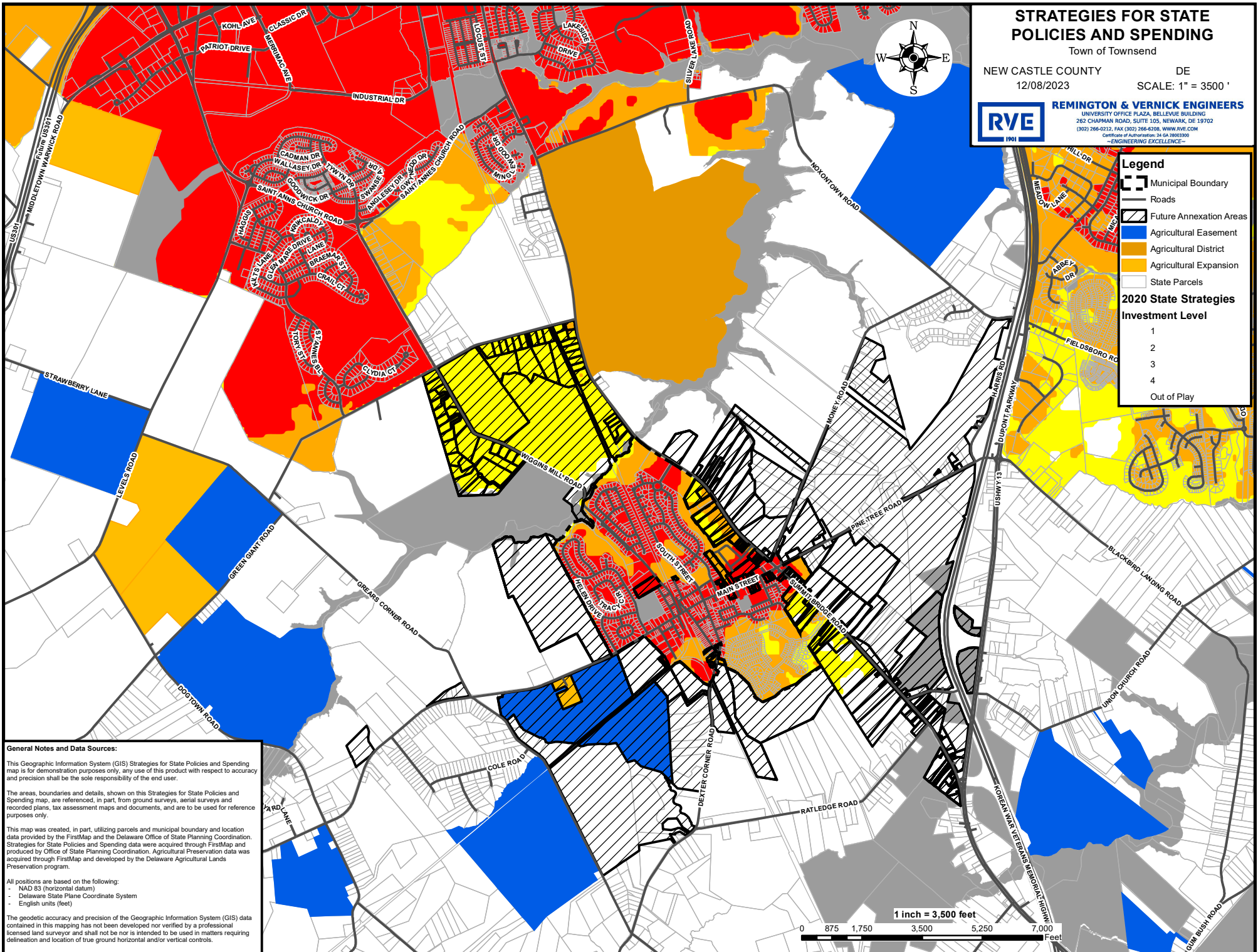
Town of Townsend

NEW CASTLE COUNTY  
12/08/2023

DE  
SCALE: 1" = 3500'



**REMINGTON & VERNICK ENGINEERS**  
UNIVERSITY OFFICE PLAZA, BELLEVUE BUILDING  
262 CHAPMAN ROAD, SUITE 105, NEWARK, DE 19702  
(302) 766-0212, FAX (302) 766-8208, WWW.RVE.COM  
Certificate of Authorization: 24 GA 2800390  
—ENGINEERING EXCELLENCE—



**Legend**

- Municipal Boundary
- Roads
- Future Annexation Areas
- Agricultural Easement
- Agricultural District
- Agricultural Expansion
- State Parcels

**2020 State Strategies Investment Level**

- 1
- 2
- 3
- 4
- Out of Play

**General Notes and Data Sources:**

This Geographic Information System (GIS) Strategies for State Policies and Spending map is for demonstration purposes only, any use of this product with respect to accuracy and precision shall be the sole responsibility of the end user.

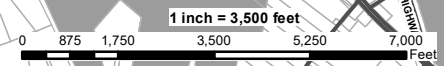
The areas, boundaries and details, shown on this Strategies for State Policies and Spending map, are referenced, in part, from ground surveys, aerial surveys and recorded plans, tax assessment maps and documents, and are to be used for reference purposes only.

This map was created, in part, utilizing parcels and municipal boundary and location data provided by the FirstMap and the Delaware Office of State Planning Coordination. Strategies for State Policies and Spending data were acquired through FirstMap and produced by Office of State Planning Coordination. Agricultural Preservation data was acquired through FirstMap and developed by the Delaware Agricultural Lands Preservation program.

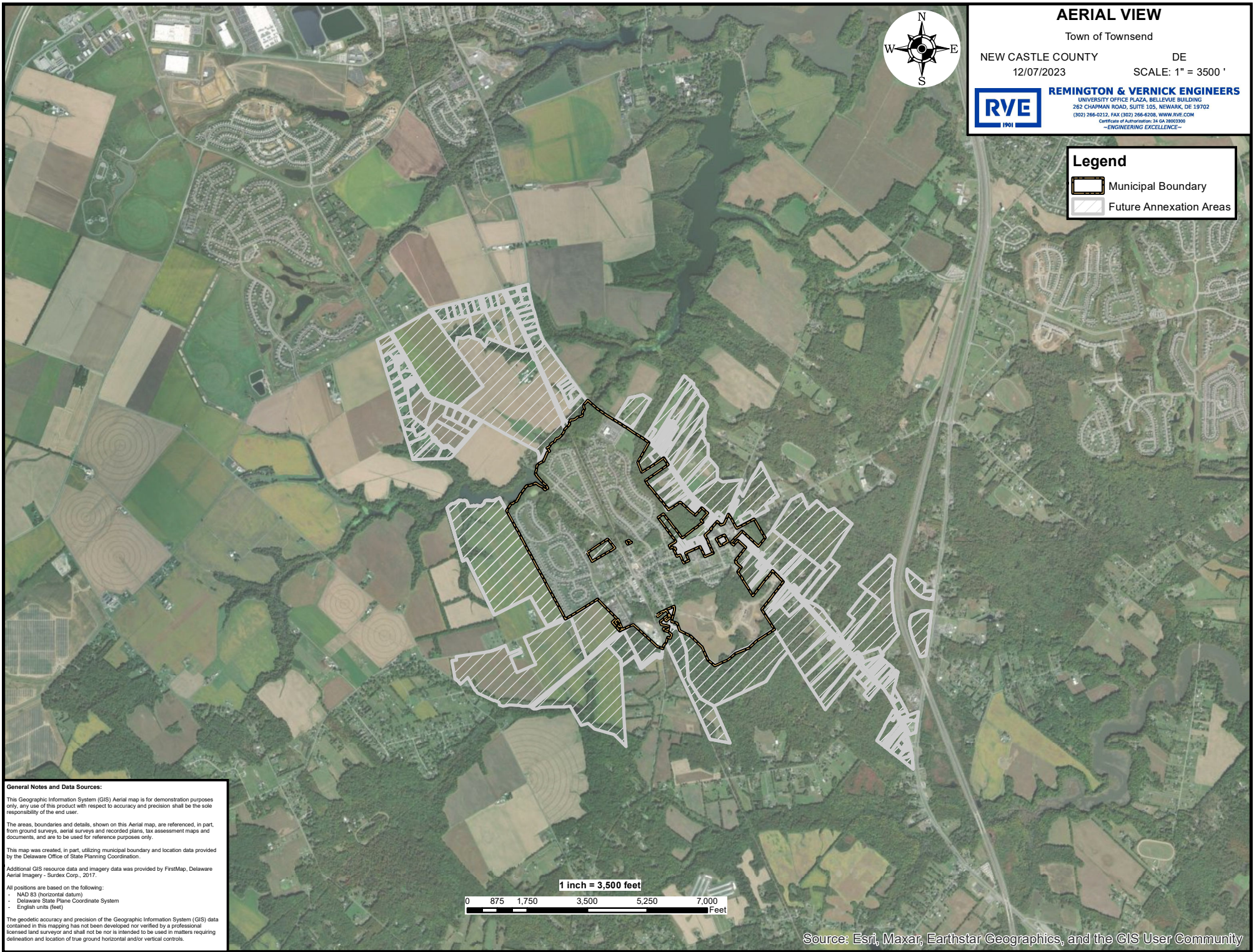
All positions are based on the following:

- NAD 83 (horizontal datum)
- Delaware State Plane Coordinate System
- English units (feet)

The geodetic accuracy and precision of the Geographic Information System (GIS) data contained in this mapping has not been developed nor verified by a professional licensed land surveyor and shall not be nor is intended to be used in matters requiring delineation and location of true ground horizontal and/or vertical controls.







**AERIAL VIEW**

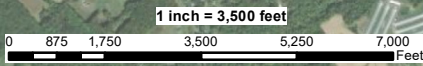
Town of Townsend  
 NEW CASTLE COUNTY DE  
 12/07/2023 SCALE: 1" = 3500'

**RVE** 1901  
**REMINGTON & VERNICK ENGINEERS**  
 UNIVERSITY OFFICE PLAZA, BELLEVUE BUILDING  
 262 CHAPMAN ROAD, SUITE 105, NEWARK, DE 19702  
 (302) 266-0212, FAX (302) 266-6208, WWW.RVE.COM  
 Certificate of Authorization: 34 GA 28003300  
 —ENGINEERING EXCELLENCE—

**Legend**

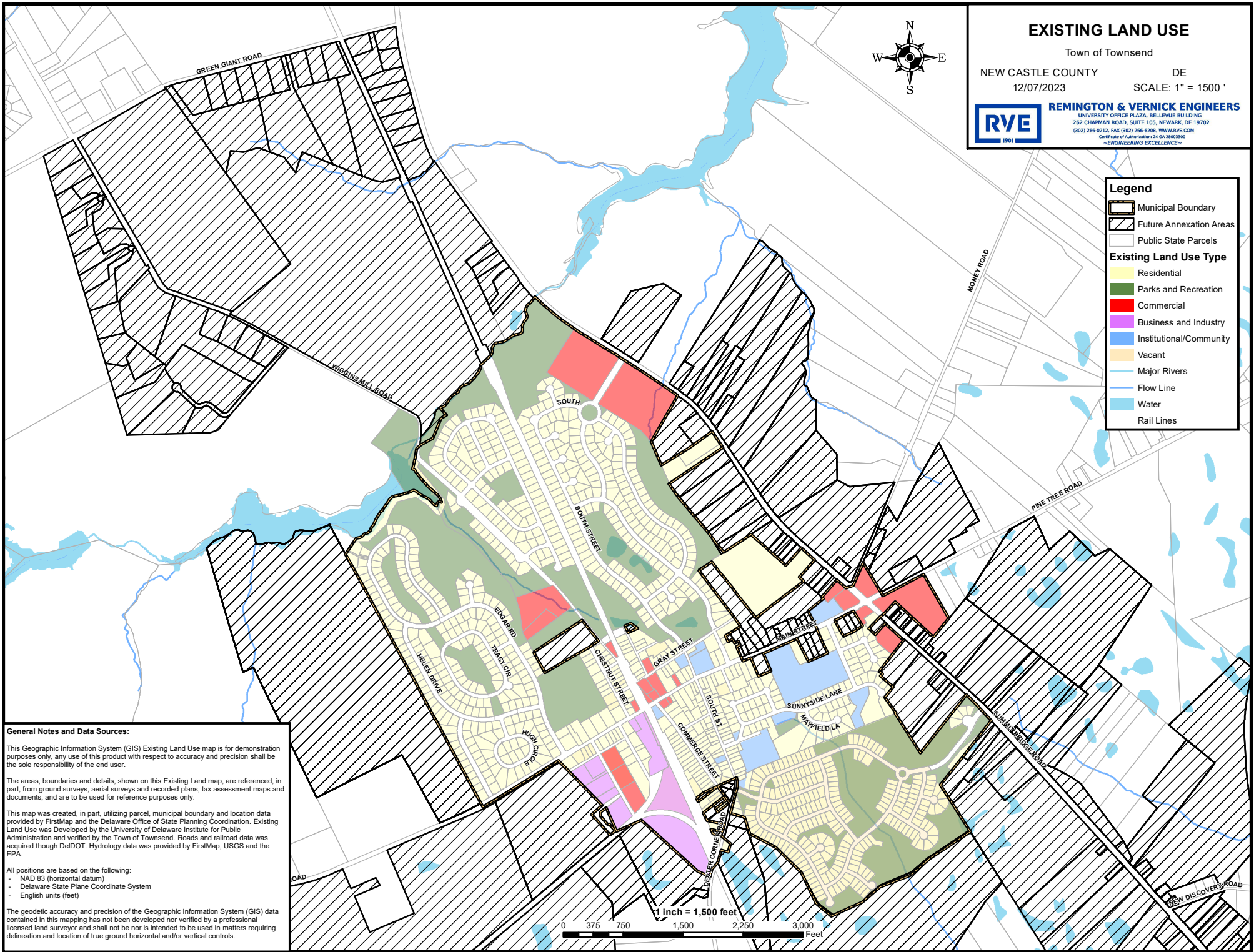
- Municipal Boundary
- Future Annexation Areas

**General Notes and Data Sources:**  
 This Geographic Information System (GIS) Aerial map is for demonstration purposes only; any use of this product with respect to accuracy and precision shall be the sole responsibility of the end user.  
 The areas, boundaries and details, shown on this Aerial map, are referenced, in part, from ground surveys, aerial surveys and recorded plans, tax assessment maps and documents, and are to be used for reference purposes only.  
 This map was created, in part, utilizing municipal boundary and location data provided by the Delaware Office of State Planning Coordination.  
 Additional GIS resource data and imagery data was provided by FirstMap, Delaware Aerial Imagery - Surlex Corp., 2017.  
 All positions are based on the following:  
 - NAD 83 (horizontal datum)  
 - Delaware State Plane Coordinate System  
 - English units (feet)  
 The geodetic accuracy and precision of the Geographic Information System (GIS) data contained in this mapping has not been developed nor verified by a professional licensed land surveyor and shall not be nor is intended to be used in matters requiring delineation and location of true ground horizontal and/or vertical controls.



Source: Esri, Maxar, Earthstar Geographics, and the GIS User Community





## EXISTING LAND USE

Town of Townsend  
 NEW CASTLE COUNTY DE  
 12/07/2023 SCALE: 1" = 1500'

**REMINGTON & VERNICK ENGINEERS**  
 UNIVERSITY OFFICE PLAZA, BELLEVUE BUILDING  
 262 CHAPMAN ROAD, SUITE 105, NEWARK, DE 19702  
 (302) 266-0232, FAX (302) 266-6708, WWW.RVE.COM  
Certificate of Authorization: 24-08-000200  
 —ENGINEERING EXCELLENCE—



**Legend**

- Municipal Boundary
- Future Annexation Areas
- Public State Parcels

**Existing Land Use Type**

- Residential
- Parks and Recreation
- Commercial
- Business and Industry
- Institutional/Community
- Vacant
- Major Rivers
- Flow Line
- Water
- Rail Lines

**General Notes and Data Sources:**

This Geographic Information System (GIS) Existing Land Use map is for demonstration purposes only, any use of this product with respect to accuracy and precision shall be the sole responsibility of the end user.

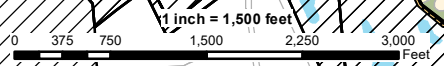
The areas, boundaries and details, shown on this Existing Land map, are referenced, in part, from ground surveys, aerial surveys and recorded plans, tax assessment maps and documents, and are to be used for reference purposes only.

This map was created, in part, utilizing parcel, municipal boundary and location data provided by FirstMap and the Delaware Office of State Planning Coordination. Existing Land Use was Developed by the University of Delaware Institute for Public Administration and verified by the Town of Townsend. Roads and railroad data was acquired through DeIDOT. Hydrology data was provided by FirstMap, USGS and the EPA.

All positions are based on the following:

- NAD 83 (horizontal datum)
- Delaware State Plane Coordinate System
- English units (feet)

The geodetic accuracy and precision of the Geographic Information System (GIS) data contained in this mapping has not been developed nor verified by a professional licensed land surveyor and shall not be nor is intended to be used in matters requiring delineation and location of true ground horizontal and/or vertical controls.





# HISTORIC LOCATIONS

Town of Townsend

NEW CASTLE COUNTY

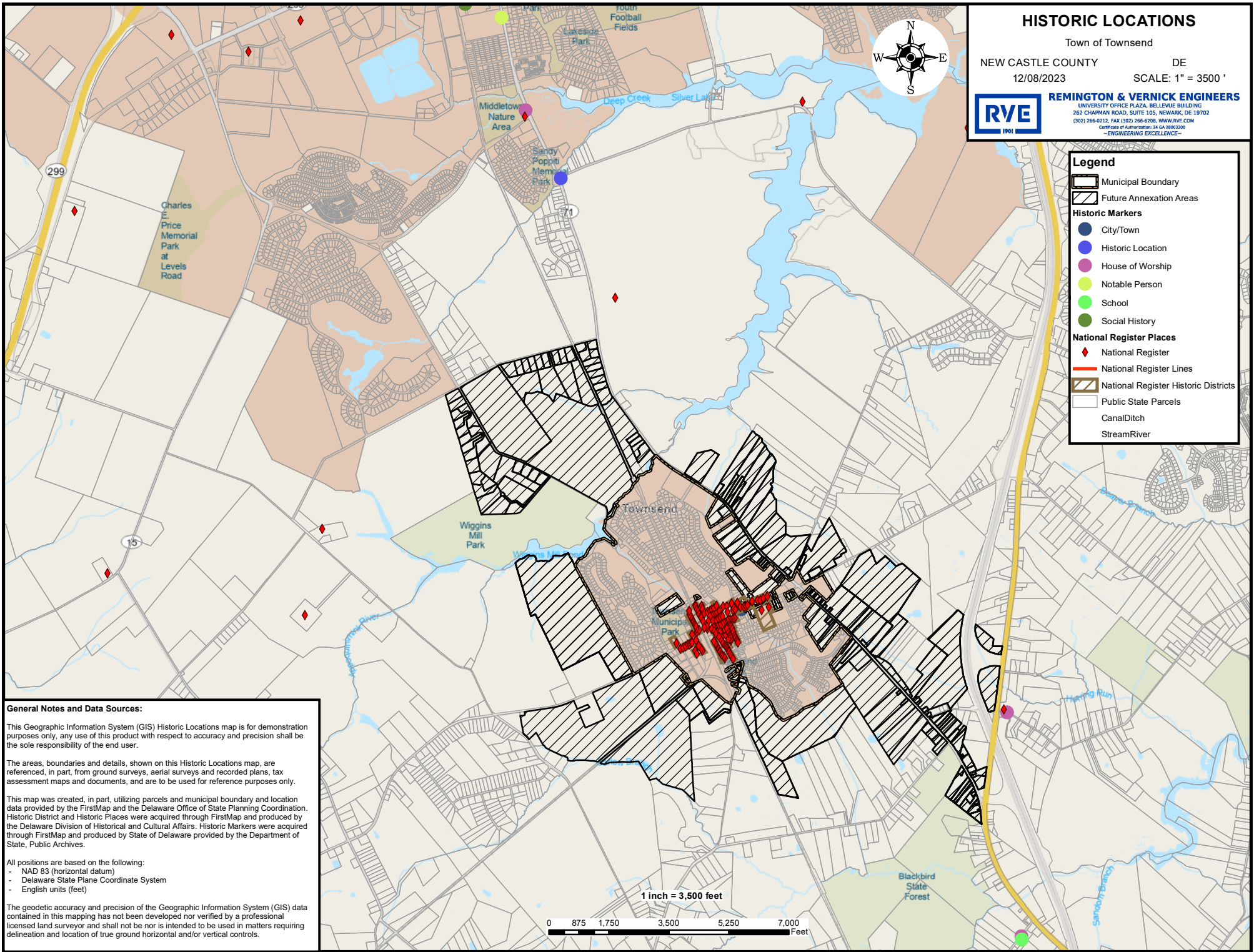
DE

12/08/2023

SCALE: 1" = 3500'



**REMINGTON & VERNICK ENGINEERS**  
UNIVERSITY OFFICE PLAZA, BELLEVUE BUILDING  
262 CHAPMAN ROAD, SUITE 105, NEWARK, DE 19702  
(302) 266-0212, FAX (302) 266-6208, WWW.RVE.COM  
Certificate of Authorization: 24-04-0000300  
—ENGINEERING EXCELLENCE—



**Legend**

- Municipal Boundary
- Future Annexation Areas
- Historic Markers**
  - City/Town
  - Historic Location
  - House of Worship
  - Notable Person
  - School
  - Social History
- National Register Places**
  - National Register
  - National Register Lines
  - National Register Historic Districts
  - Public State Parcels
  - Canal/Ditch
  - Stream/River

**General Notes and Data Sources:**

This Geographic Information System (GIS) Historic Locations map is for demonstration purposes only, any use of this product with respect to accuracy and precision shall be the sole responsibility of the end user.

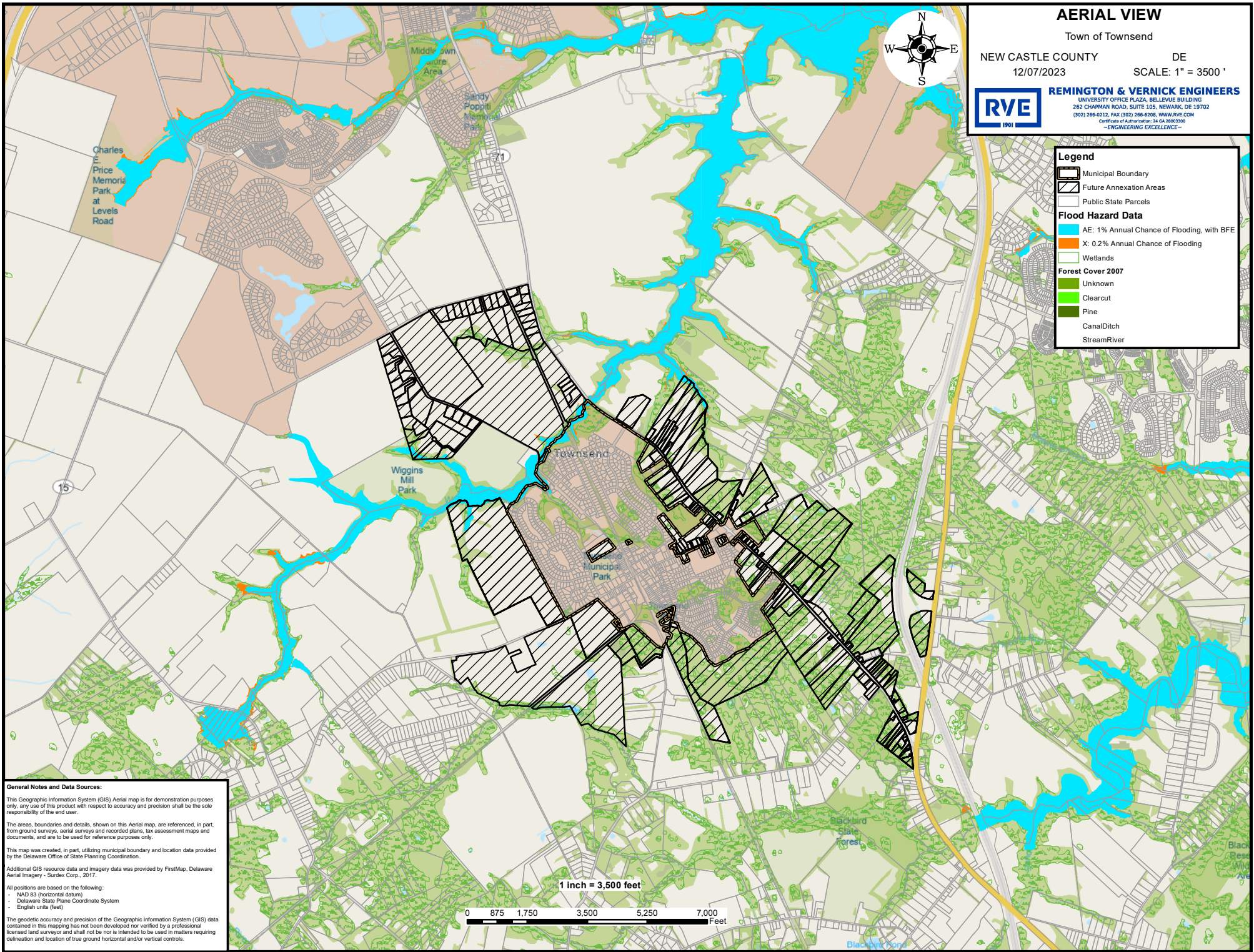
The areas, boundaries and details, shown on this Historic Locations map, are referenced, in part, from ground surveys, aerial surveys and recorded plans, tax assessment maps and documents, and are to be used for reference purposes only.

This map was created, in part, utilizing parcels and municipal boundary and location data provided by the FirstMap and the Delaware Office of State Planning Coordination. Historic District and Historic Places were acquired through FirstMap and produced by the Delaware Division of Historical and Cultural Affairs. Historic Markers were acquired through FirstMap and produced by State of Delaware provided by the Department of State, Public Archives.

All positions are based on the following:  
- NAD 83 (horizontal datum)  
- Delaware State Plane Coordinate System  
- English units (feet)

The geodetic accuracy and precision of the Geographic Information System (GIS) data contained in this mapping has not been developed nor verified by a professional licensed land surveyor and shall not be nor is intended to be used in matters requiring delineation and location of true ground horizontal and/or vertical controls.





# AERIAL VIEW

Town of Townsend

NEW CASTLE COUNTY

DE

12/07/2023

SCALE: 1" = 3500'



**REMINGTON & VERNICK ENGINEERS**  
 UNIVERSITY OFFICE PLAZA, BELLEVUE BUILDING  
 262 CHAPMAN ROAD, SUITE 105, NEWARK, DE 19702  
 (302) 266-0212, FAX (302) 266-6208, WWW.RVE.COM  
 Certificate of Authorization: 34 GA 28003300  
 —ENGINEERING EXCELLENCE—

**Legend**

- Municipal Boundary
- Future Annexation Areas
- Public State Parcels
- Flood Hazard Data**
- AE: 1% Annual Chance of Flooding, with BFE
- X: 0.2% Annual Chance of Flooding
- Wetlands
- Forest Cover 2007**
- Unknown
- Clearcut
- Pine
- Canal/Ditch
- Stream/River

**General Notes and Data Sources:**

This Geographic Information System (GIS) Aerial map is for demonstration purposes only; any use of this product with respect to accuracy and precision shall be the sole responsibility of the end user.

The areas, boundaries and details, shown on this Aerial map, are referenced, in part, from ground surveys, aerial surveys and recorded plans, tax assessment maps and documents, and are to be used for reference purposes only.

This map was created, in part, utilizing municipal boundary and location data provided by the Delaware Office of State Planning Coordination.

Additional GIS resource data and imagery data was provided by FirstMap, Delaware Aerial Imagery - Surdex Corp., 2017.

All positions are based on the following:

- NAD 83 (horizontal datum)
- Delaware State Plane Coordinate System
- English units (feet)

The geodetic accuracy and precision of the Geographic Information System (GIS) data contained in this mapping has not been developed nor verified by a professional licensed land surveyor and shall not be nor is intended to be used in matters requiring delineation and location of true ground horizontal and/or vertical controls.

